

Steel Industry Flume and Descale Hood Repair

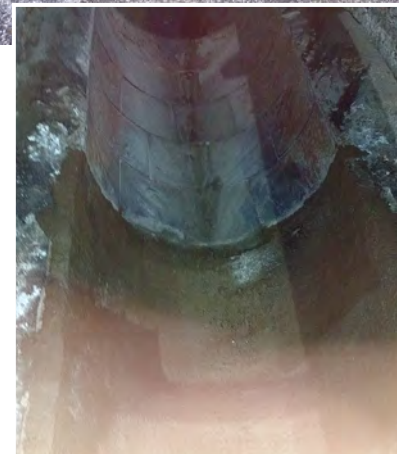
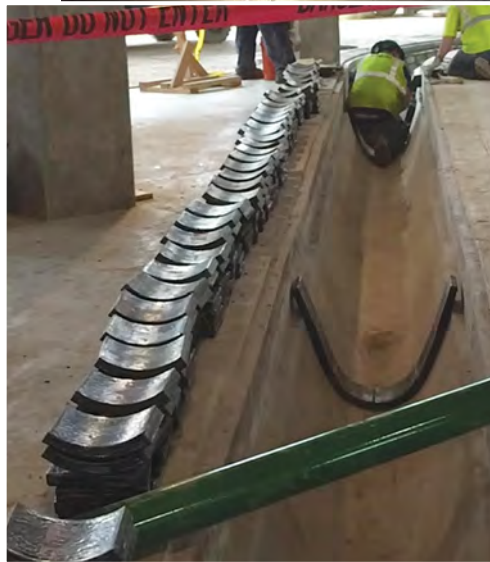
Optimized Wear Protection

Kalenborn Abresist flume linings have been engineered, designed and installed in a rolling mill and in continuous caster flumes for many years. Most are still performing as well as the first day with minor repairs caused by dropping large objects into the flumes.

Underneath the descale hoods scale flume walls are often degraded from the high pressure water that is diverted by the slab. We repair these walls and line the flumes with a combination of our Abresist® and our Kalcret® wear products.

Abresist is sub volcanic in nature. It is a crystalline structure that has been re-melted in electric furnaces and poured into tile shapes. Custom Abresist tile sets have been designed, built and installed in more than 100 flumes in North America for more than 60 years. Abresist tiled flumes will outlast standard concrete 10 to 20 times.

Kalcret is a cementitious compound made of high-strength, high-tensile concrete. We mix many types and sizes of hard materials in the concrete to form a very hard, but very easy to install, homogeneous lining. This Kalcret lining will outlast standard concrete by 5 to 10 times.



Customers

- Acme Steel
- Alan Wood Steel
- Algoma Steel Corp.
- Allegheny Ludlum
- Altos Hornos de Mexico
- Arcelor Mittal
- Armco Steel Corp.
- Benteler Steel
- Bethlehem Steel Corp.
- Caparo Steel
- Dominion Foundry & Steel
- Gerdau Mac Steel
- Great Lakes Steel
- Inland Steel Co.
- Lone Star Steel Co.
- LTV Steel
- Lukens Steel Co.
- Mesta-Wilson-Foster
- North American Stainless
- Pittsburgh Steel
- Steel Co. of Canada
- TCPO
- Tenaris Bay City
- U.S. Steel Corp.
- Valorec
- Wheeling Steel Corp.
- Youngstown Sheet & Tube



Kalenborn Abresist Corp.

5541 North State Road 13, Urbana, IN 46990
Phone: 260-774-3327 • Toll Free: 800-348-0717
www.kalenborn.us

10082 – September 2020 © Kalenborn Abresist



Kalenborn

Wear Protection Solutions