

# KALCRET®-S Sprayable Hard Compound

**Abrasion Resistant Lining for Large Surfaces  
Installs Quickly, Even Overhead**



New spray system applies abrasion resistant KALCRET®-S wear compound to large surfaces quickly and reliably, in a uniform, compact layer, free of joints. KALCRET®-S significantly reduces wear and abrasion on system components and pipes in many industries including cement, power, glass, iron/steel, mining, and refuse incineration.

KALCRET®-S hard compound is a mixture of hard aggregate materials ranging in size from 0-4 mm and consisting of bauxite or corundum (depending on application), cement binder and micro and nano silica. Defined amounts of steel or other fibers add structural strength.

- Spray system delivers a continuous, uniform layer
- Spray horizontally or vertically to achieve a joint free lining
- Surface can be smoothed immediately after spraying
- No sandblasting required before application
- Fast application rate > 5m<sup>2</sup>/Hr. (54 sq. ft./Hr.)
- 8 hour setting time
- Use at temperatures up to 1200°C (2192°F)
- Excellent thermal shock resistance and oxidation stability
- Thicknesses range from 20 to 100mm (.78" to 3.93"), depending on severity of wear
- Use wire mesh or anchors for mechanical attachment

**KALCRET®-S**  
Sprayable hard compound

# KALCRET®-S Sprayable Hard Compound

**Provides Fast, Reliable Wear Protection for Separators, Cyclones, Ductwork and Dust Collectors**

## Kalenborn Spray Technology

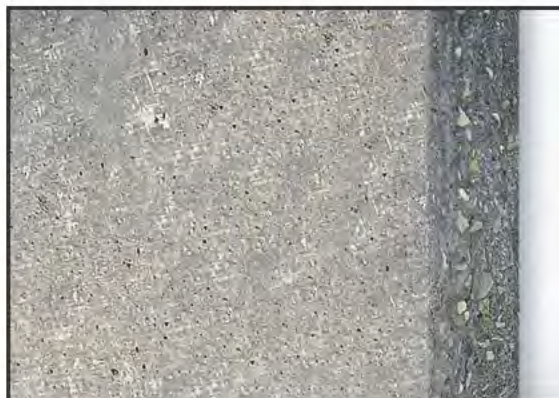
- Spray system especially developed for installing KALCRET®-S
- Continuous and homogeneous delivery of the KALCRET®-S compound to the spray nozzle
- High-pressure water dosing and injection developed for KALCRET®-S to achieve optimal wetting
- Spraying system made available in installation containers



*KALCRET®-S spray system*

## KALCRET®-S Properties

<b>Hard aggregate</b>	Bauxite
<b>Particle size</b>	0...4 mm (0-.16")
<b>Density</b>	2,7 g/cm <sup>3</sup> (168 lbs/ft <sup>3</sup> )
<b>Compressive strength</b>	(28 days) 170 MPa (24,600 psi)
<b>Bending tensile strength</b>	(28 days) 22 MPa (3,190 psi)
<b>Maximum application temperature</b>	400° C (N) (752° F) and/or 1200° C (T) (2192° F)
<b>Aggregate percentage</b>	70%



*Homogenous structure*

## Preparing the job

- Working temperatures between 5 and 30° C (41 and 86° F)
- Steel surfaces shall be mechanically cleaned
- Concrete surfaces shall be free of oil, laitance and loose particles

## Working of KALCRET®-S

- Conveying distance of spraying compound longer than 50 m/160' from the spraying machine
- Particularly suitable for complicated geometries and large surfaces
- Heating-up curves shall be duly observed
- Material spillage less than 20%
- 75% of final strength reached as early as 8 hours after installation
- Working distance 800 to 1200 mm/32"-48"



## Kalenborn Abresist Corporation

5541 North State Road 13, Urbana, IN 46990  
Phone: 260-774-3327 • Toll Free: 800-348-0717  
[www.kalenborn.us](http://www.kalenborn.us) • E-mail: [info@abresist.com](mailto:info@abresist.com)